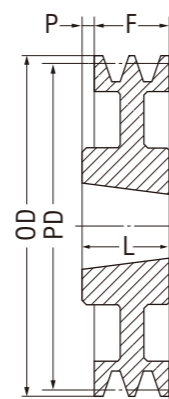
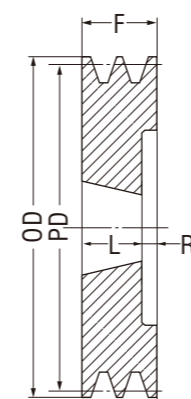


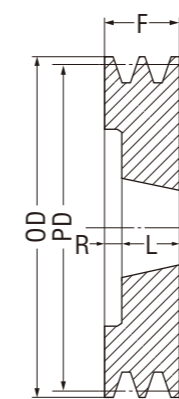
TYPE 4



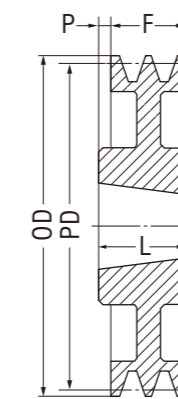
TYPE 8



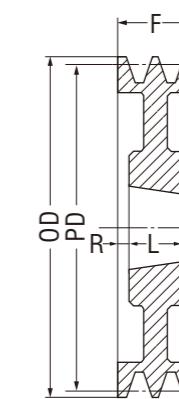
TYPE 5



TYPE 6



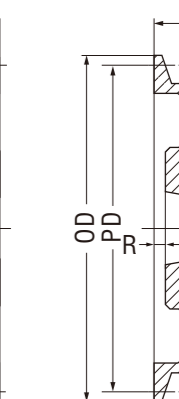
TYPE 8



TYPE 9



TYPE 13



TYPE 15

(単位:mm)

(単位:mm)

品番	PD	OD	BUSHING		TYPE	L	P	R	F	質量 (KG)
	データ径	外径	品番No.	最大軸穴径	形状図番	ボス長さ	出	引込み	リム幅	
SPA 75-1	75	80.5	1108	28	4	22	2	-	20	0.42
SPA 80-1	80	85.5	1210	32	4	25	5	-	20	0.48
SPA 83-1	83	88.5	1210	32	4	25	5	-	20	0.53
SPA 85-1	85	90.5	1210	32	4	25	5	-	20	0.58
SPA 88-1	88	93.5	1210	32	4	25	5	-	20	0.62
SPA 90-1	90	95.5	1210	32	4	25	5	-	20	0.66
SPA 93-1	93	98.5	1210	32	4	25	5	-	20	0.74
SPA 95-1	95	100.5	1210	32	4	25	5	-	20	0.76
SPA 98-1	98	103.5	1210	32	4	25	5	-	20	0.81
SPA 100-1	100	105.5	1610	42	4	25	5	-	20	0.77
SPA 103-1	103	108.5	1610	42	4	25	5	-	20	0.84
SPA 106-1	106	111.5	1610	42	4	25	5	-	20	0.90
SPA 109-1	109	114.5	1610	42	4	25	5	-	20	0.96
SPA 112-1	112	117.5	1610	42	4	25	5	-	20	1.05
SPA 118-1	118	123.5	1610	42	4	25	5	-	20	1.19
SPA 125-1	125	130.5	1610	42	4	25	5	-	20	1.38
SPA 132-1	132	137.5	1610	42	4	25	5	-	20	1.60
SPA 140-1	140	145.5	1610	42	4	25	5	-	20	1.83
SPA 150-1	150	155.5	1610	42	8	25	5	-	20	1.76
SPA 160-1	160	165.5	1610	42	8	25	5	-	20	1.82
SPA 170-1	170	175.5	1610	42	8	25	5	-	20	2.00
SPA 180-1	180	185.5	1610	42	8	25	5	-	20	2.02

品番	PD	OD	BUSHING		TYPE	L	P	R	F	質量 (KG)
	データ径	外径	品番No.	最大軸穴径	形状図番	ボス長さ	出	引込み	リム幅	
SPA 75-2	75	80.5	1108	28	5	22	-	13	35	0.61
SPA 80-2	80	85.5	1210	32	5	25	-	10	35	0.62
SPA 83-2	83	88.5	1210	32	5	25	-	10	35	0.65
SPA 85-2	85	90.5	1210	32	5	25	-	10	35	0.74
SPA 88-2	88	93.5	1210	32	5	25	-	10	35	0.81
SPA 90-2	90	95.5	1610	42	5	25	-	10	35	0.72
SPA 93-2	93	98.5	1610	42	5	25	-	10	35	0.80
SPA 95-2	95	100.5	1610	42	5	25	-	10	35	0.86
SPA 98-2	98	103.5	1610	42	5	25	-	10	35	0.93
SPA 100-2	100	105.5	1610	42	6	25	-	10	35	0.98
SPA 103-2	103	108.5	1610	42	6	25	-	10	35	1.10
SPA 106-2	106	111.5	1610	42	6	25	-	10	35	1.19
SPA 109-2	109	114.5	1610	42	6	25	-	10	35	1.28
SPA 112-2	112	117.5	1610	42	6	25	-	10	35	1.35
SPA 118-2	118	123.5	1610	42	6	25	-	10	35	1.56
SPA 125-2	125	130.5	1610	42	6	25	-	10	35	1.86
SPA 132-2	132	137.5	2012	50	6	32	-	3	35	2.09
SPA 140-2	140	145.5	2012	50	5	32	-	3	35	2.45
SPA 150-2	150	155.5	2012	50	5	32	-	3	35	2.97
SPA 160-2	160	165.5	2012	50	5	32	-	3	35	3.50
SPA 170-2	170	175.5	2012	50	15	32	-	3	35	3.17
SPA 180-2	180	185.5	2012	50	9	32	-	1.5	35	3.37
SPA 190-2	190	195.5	2012	50	9	32	-	1.5	35	3.66
SPA 200-2	200	205.5	2517	60	8	45	10	-	35	4.54
SPA 212-2	212	217.5	2517	60	8	45	10	-	35	5.16
SPA 224-2	224	229.5	2517	60	13	45	10	-	35	5.35
SPA 236-2	236	241.5	2517	60	13	45	10	-	35	5.84
SPA 250-2	250	255.5	2517	60	13	45	10	-	35	6.09
SPA 280-2	280	285.5	2517	60	13	45	10	-	35	6.29
SPA 300-2	300	305.5	2517	60	13	45	10	-	35	7.04
SPA 315-2	315	320.5	2517	60	13	45	10	-	35	7.01